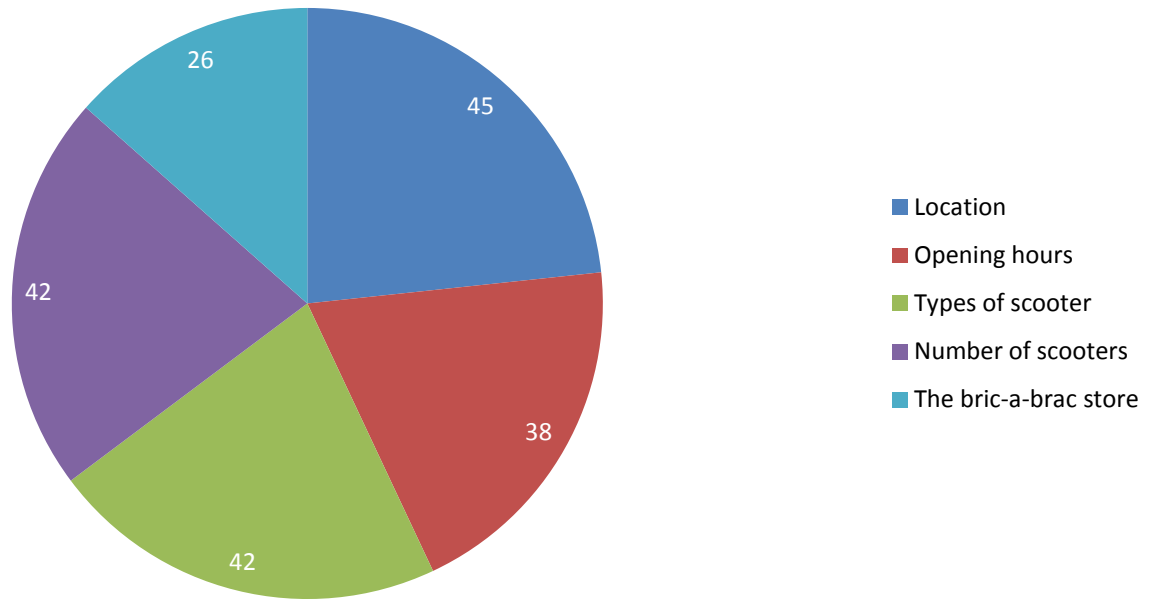
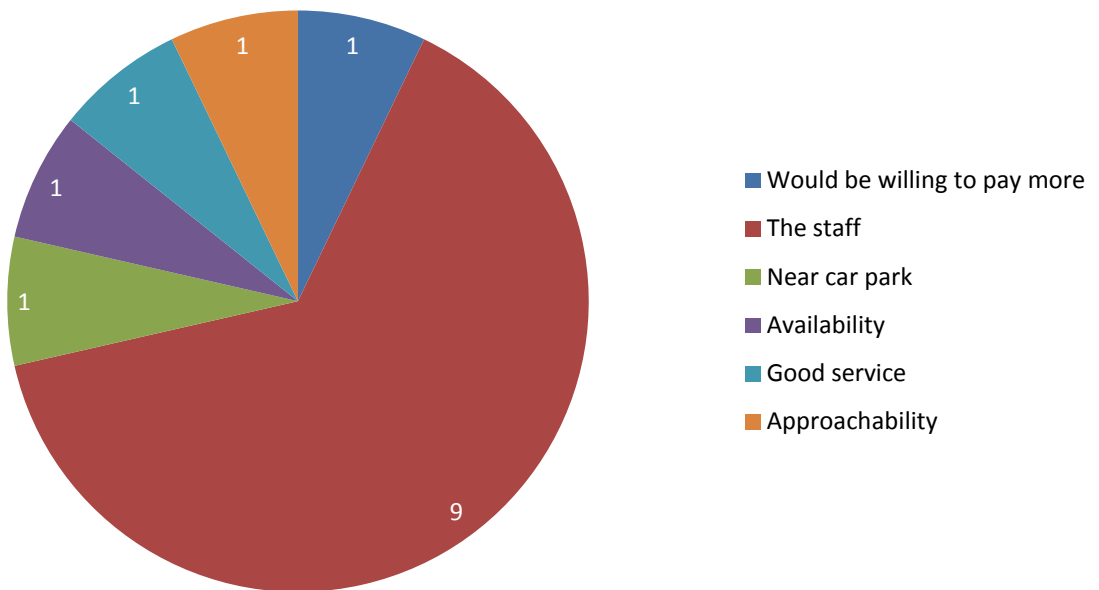


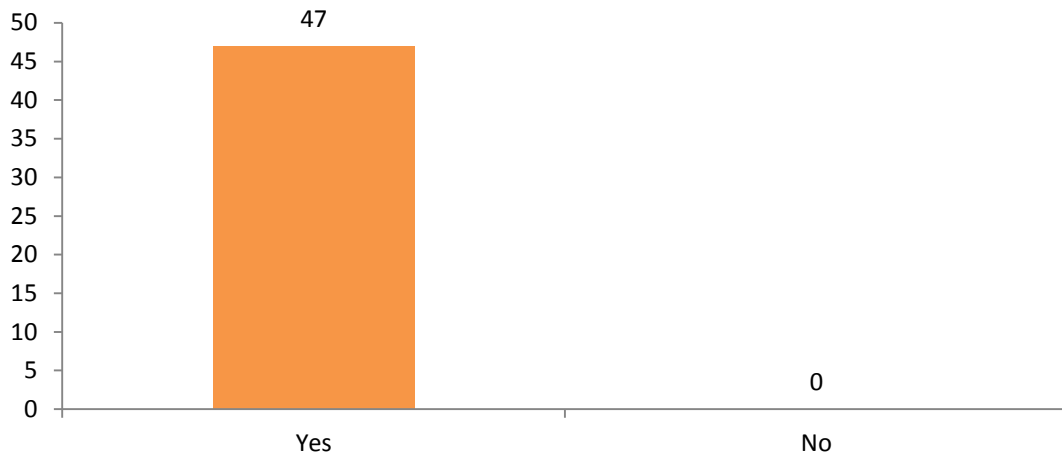
What do you like about the current Shopmobility Service?



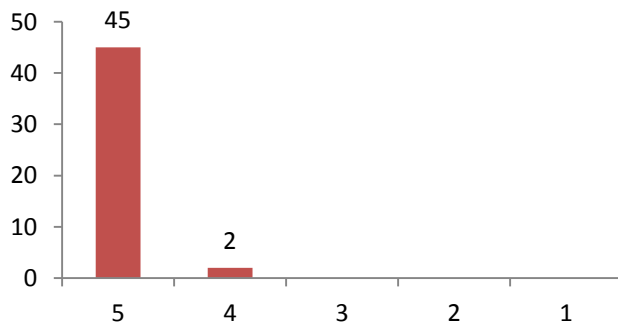
What do you like about the Service...Other



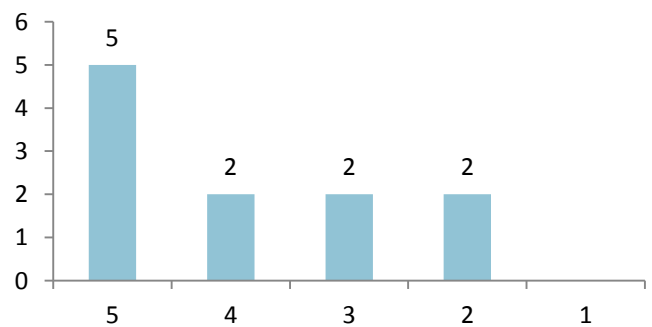
Would you recommend the service to others?



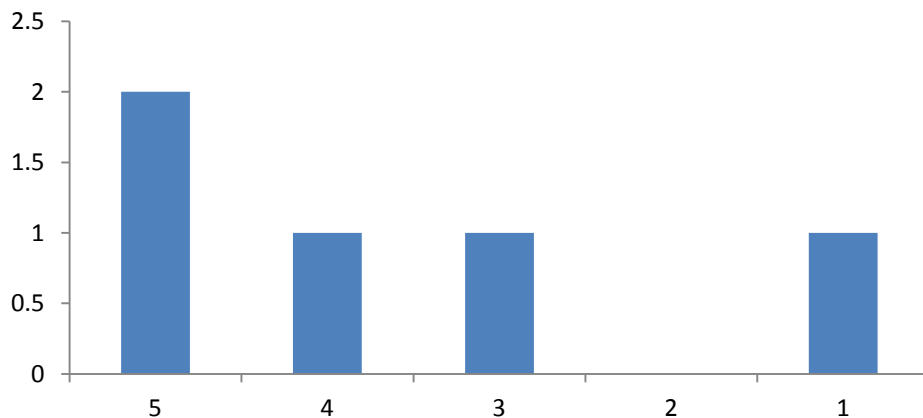
How would you rate the Gloucester service? 5 = Excellent, 1 = Poor



How would you rate the Cheltenham Service? 5 = Excellent, 1 = Poor



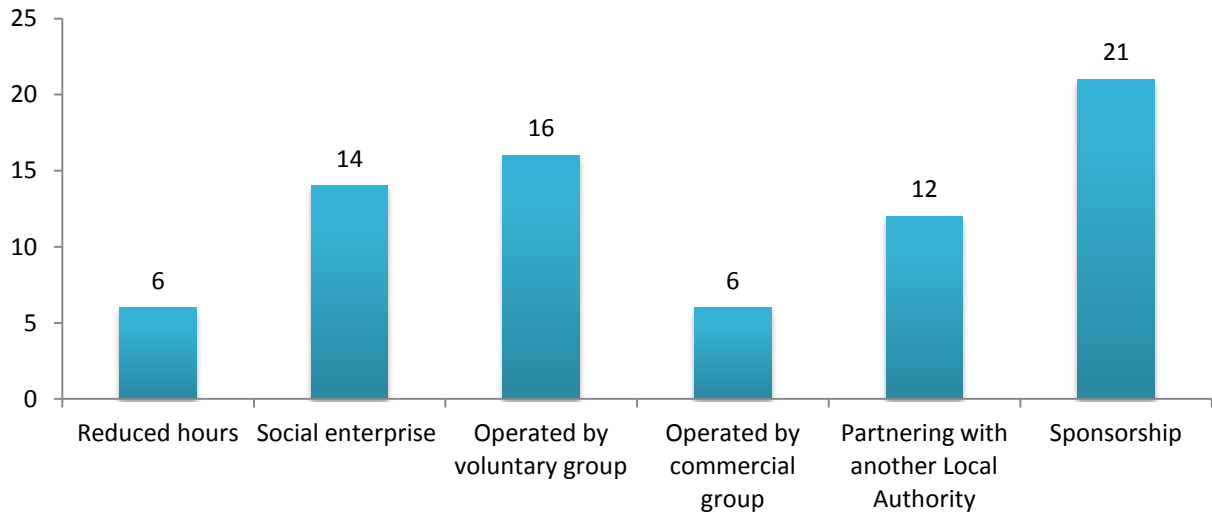
How would you rate the Weston Super Mare Service? 5 = Excellent, 1 = Poor



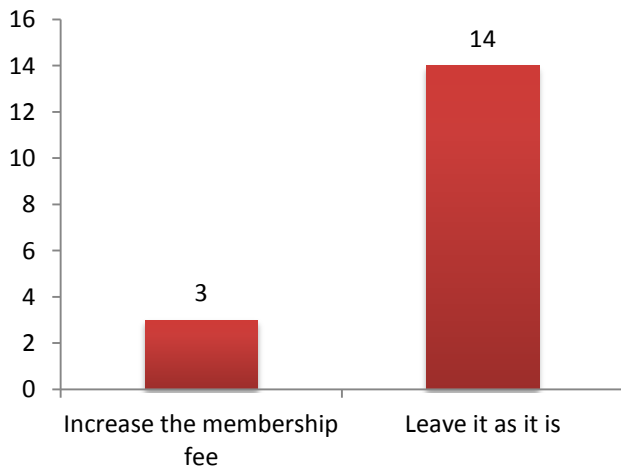
What is the most important thing to you about the Shopmobility Service?



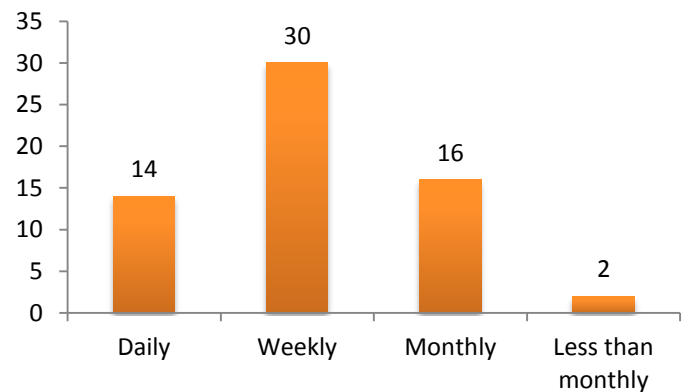
The Council needs to save £50,000. Which is the most acceptable way of doing so?



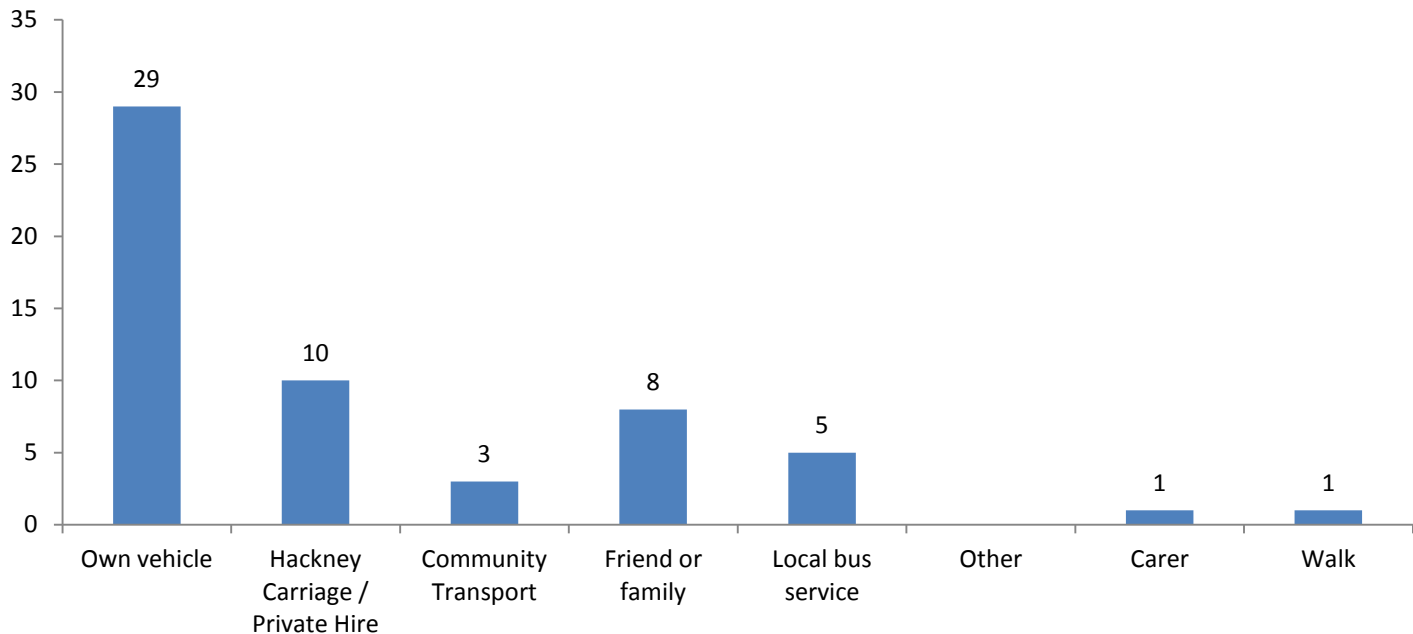
Other suggestions for saving £50,000



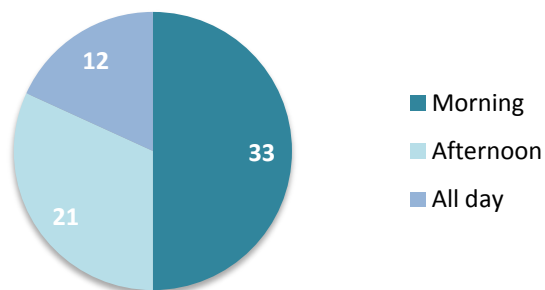
How often do you use the service?



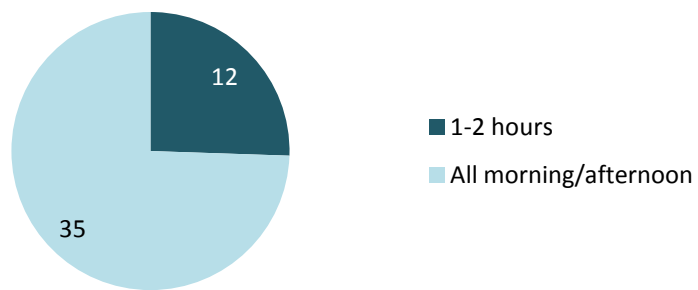
How do you access the service?



At what time of day do you use the service?



How long, on average, do you use the service for?



What do you use the scooter for?

